



LATEST ISSUE ONLINE NOW

SEPTEMBER 2020

Smiths Beach Resort

G&G _ Magazine • Oct 29, 2020

Mobilia, an Australian company specialising in high-end designer products from the world's best brands, recently completed the interiors of Smiths Beach Resort in Yallingup, Australia.



Set within a National Park, this environmentally-friendly and picturesque resort is a restful sanctuary providing the ultimate Australian beachside experience, with ideal leisure facilities, self-catering accommodation and excellent dining and gourmet deli facilities.



Mobilia's Director Salvatore Fazzari says he is incredibly proud to add Smiths Beach Resort to Mobilia's array of recently completed projects. *"Smiths Beach is an incredibly special part of the world and being presented with the opportunity to work alongside the wonderful team at Smiths Beach Resort to furnish one of Australia's most renowned and captivating resorts was extremely exciting and an honour for the team. The resort has long seduced its visitors with the natural beauty that surrounds it and we were fascinated by the way the resort is nested so delicately*

between the vegetation and the ocean.

We wanted to be respectful to that balance and the purity of the surroundings, compliment the timelessness of the architecture and enhance the experience of the resort by recreating that delicate line and sense of luxury in a relaxed, natural manner. Colours and simple understated forms within the furniture selections were therefore very important to the overall ingredients and in achieving the overall result. We had to select furniture that was extremely hardwearing and of a very high commercial standard considering the application and the exposure to the natural elements considering the resort's close vicinity to the ocean and the reserve."



As a member of the prestigious Small Luxury Hotels Of The World™, the resort has always prided itself in providing an exemplary standard of service and an outstanding experience for its visitors which is now elevated further by the refreshment.

General Manager and business owner, Adam McWhirter of Smiths Beach Resort said *"While the architecturally award winning design provides us with the ideal luxury base to work from, we are delighted to take our product to the next level (with the refurbishment) with a range of stunning improvements which are sympathetic to our ocean and National Park environs. We look forward to showcasing our new look to our valued guests."*



Mobilia has called upon brands such Kettal, Triconfort, Marset, Joquer, Fritz Hansen, Vondom and Inclass, as well as some locally made custom furniture pieces to help make this a stand out luxury, designer hotel in every sense of the word.



Photography by Ange Wall Photography, David Dare Parker, Helen Janssen Bense and Bobby Bense, Small Luxury Hotels of the World

*Address: 67 Smiths Beach Rd - Yallingup WA, Australia
www.smithsbeachresort.com.au
www.mobilia.com.au*

< Older Post

Condividi

0 Comments

Sort by **Newest** ▾

Add a comment...

 Facebook Comments Plugin

Most popular



Cliff Front 7

The overall design is a result of applied challenges through plot boundaries amongst the natural landscape. This tropical modern villa consists of 4 bedrooms and maintains a consistent palette of 100-plus year-old reclaimed teak from Java, reclaimed ironwood from Kalimantan, andesite, terrazzo, local limestone, and floor to ceiling windows.

[Continue reading](#)



Reina Victoria Penthouse

The main premise of its owners was to obtain great quality rooms and the creation of a new distribution of housing that catered to their needs. Therefore, all the spaces were redistributed again, restoring all the areas and giving back their essence and soul. Homogeneous and wide areas were obtained, where natural light is one of the main protagonists. A style was chosen

[Continue reading](#)

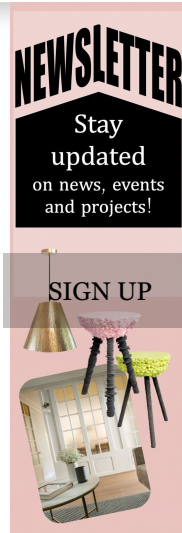




Epicurean Pied-a-Terre

Maurizio Pellizzoni designed the deluxe two-bedroom pied-a-terre with three bathrooms situated in the exclusive Ebury Square development.

[Continue reading](#)



Most recent



Shift House

The house and its program have been treated like a play of Jenga blocks; two volumes sit over each other and dissolve into the terrain. The shift of one volume further creates the necessary design and functional requirements that need to be accommodated for the other. The house is designed to respond to the site and more importantly not be obstructive in its manifestation but dissolve into the

Continue reading



Aqua Verde Residence

The brick and stucco residence was wrapped in heavy masonry porches on both the front and rear of the residence which faces the view. The interiors of the home, which had undergone a few interior renovations since being built, were somewhat jumbled with a series of disconnected living spaces and perhaps most importantly little to no positive connection to the amazing views beyond the

Continue reading



An apartment in Bologna

The apartment makes part of a building built in the Sixties. Thanks to the regular mesh of the structure, Rizoma Architetture did the realisation of a strip-out, an operation of complete renovation and demolition of the interior walls of the flat, in order to have a custom-made house that presents itself as a sartorial suit that fits perfectly on the customer's needs.

Continue reading

Show More

G&G _ Magazine

About

Gallery

Issuu

Contact

Advertising

Advertise

Readers

Partners

Newsletter

Categories

Interiors

Architecture

Travel

People

Events

Latest issues

Playful Mood

Special Stories

Beauty everywhere

Spring 2020

Classic Blue

Dubai Design Week

Paris Design Week

SOCIALIZE WITH US



G&G _ Magazine © 2020 - All Rights Reserved. | [PRIVACY POLICY](#)

Designed by Zhanna Lysohorova